



# 1 Kb DNA Ladder

Cat#  L11  L12  L11-S

Pack Size:  50 µg / 500 µL;  250µg (50 µg/500 µL X 5);  20 µg / 200 µL

Range: 250-10,000 base pairs

Recommended Load: 5 µl/well; (Containing bromophenol blue & xylene cyanol FF as tracking dyes)

Number of Bands: 13

Storage: Store at 25°C for 6 months  
Store at 4°C for 12 months  
Store at -20°C for 24 months

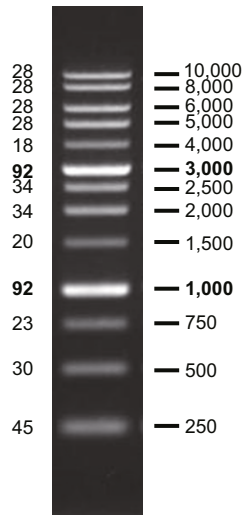
## Kit Content:

S.NO	Components	L11	L12	L11-S
1	1Kb DNA ladder (100 µg/mL)	(50 µg 500 µL)	(50 µg - 500 µL X 5)	(20 µg 200 µL)

## Introduction:

Gene to Protein Pvt Ltd offers a distinctive blend of proprietary plasmids and PCR products that are digested with specific restriction enzymes to generate 13 fragments. These fragments serve as ideal molecular weight standards for agarose gel electrophoresis, covering a range of 250-10,000 base pairs. Notably, the 1K and 3K bands have intensified to serve as reference points. The estimated DNA mass for each band (0.5 µg per load) aids in approximating the mass of DNA in other similarly sized samples with comparable intensity.

DNA Mass (ng / 5 µl)      Base Pairs



1 % TAE agarose gel